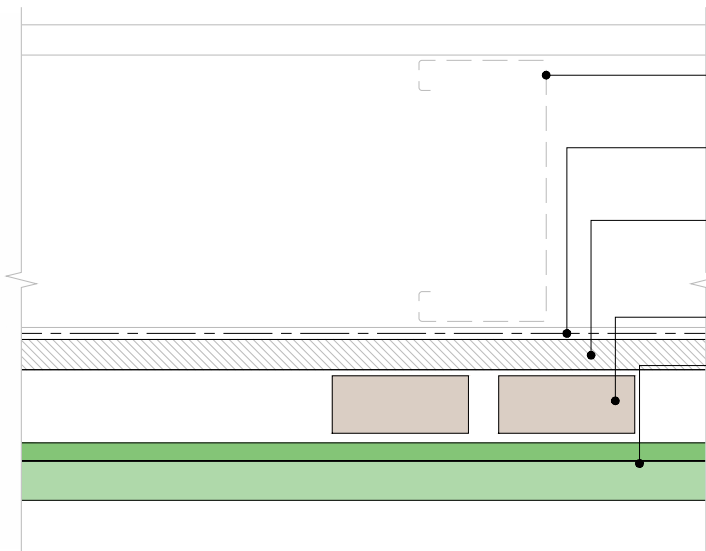


- Timber framing that complies with the NZ building code or for existing has the equivalent stiffness to the framing provisions of NZS 3604:2011
- Flexible or rigid underlay to comply with Table 23 (E2/AS1 or E2/AS4), or have an applicable CodeMark or BRANZ appraisal. Underlay to be installed in accordance with the underlay product supplier's requirements.
- Hume Pine H3.1 cavity battens fixed in accordance with HPCBBH-C1
- Hume Pine Bevelback Weatherboards to be fixed in accordance with HPCBBH-C2



### Hume Pine Bevelback W-Board Fixing to timber frame

Version V2  
Scale 1:2.5  
Date: 12/1/2023  
Ref: HPCBBH-C5



- Lightweight steel framing that complies with the NZ building code or for existing has the equivalent stiffness to the framing provisions of NZS 3604:2011.
- Flexible or rigid underlay to comply with table 23 (E2/AS1 or E2/AS4), or have an applicable CodeMark or BRANZ appraisal.
- A thermal break is required. Underlay and thermal break to be installed in accordance with the underlay or thermal break product supplier's requirements.
- Hume Pine H3.1 cavity battens fixed in accordance with HPCBBH-C3
- Hume Pine Bevelback Weatherboards to be fixed in accordance with HPCBBH-C4



### Hume Pine Bevelback W-Board Fixing to Lightweight Steel

Version V2  
Scale 1:2.5  
Date: 12/1/2023  
Ref: HPCBBH-C6

